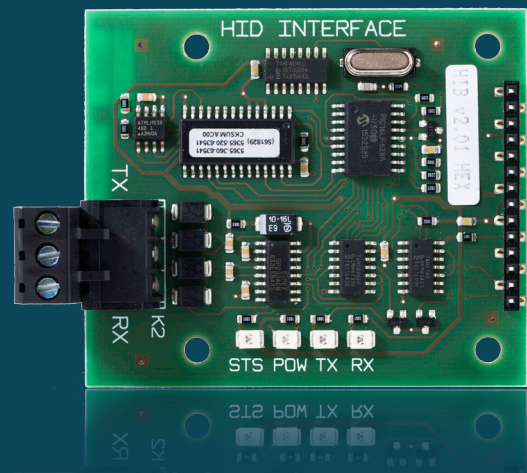


# TRANSIT Ultimate Interfaces

optional communication interface boards



## Products:

- ✓ RS232 / HID Interface Board (HIB)
- ✓ TCP/IP Interface Board
- ✓ RS422/ RS485 Interface Board
- ✓ OSDP Interface Board

### HID Interface Board (HIB)

The HID Interface Board enables TRANSIT readers to read HID prox cards at long-range in Booster applications. It can be used in combination with the Prox Booster. The Booster transmits the HID prox card information to the reader. The HIB ensures that the received card information is decoded and transmitted to a controller in the programmed format. The HIB has an integrated RS232 interface to allow communication to a PC over RS232. For example to adjust reader settings and to download new firmware in the reader. In addition, a Wiegand output is available to ensure easy integration into any existing installation.

### TCP/IP Interface Board

The TCP/IP Interface Board is designed to connect TRANSIT readers to an Ethernet network with a serial interface using the TCP/IP protocol.

### RS422/ RS485 Interface Board

The RS422/RS485 Interface Board is designed to connect TRANSIT readers to a RS422 or RS485 communication network.

### OSDP Interface Board

The OSDP Interface Board is designed to connect TRANSIT readers to a RS485 communication network making use of the OSDP v2 protocol, including secure channel communication.

Technical specifications	RS232 / HID Interface Board	TCP/IP Interface Board
Part number	9230785	9230777
Dimensions	70 x 60 x 11 mm (2.8 x 2.4 x 0.4 in.)	70 x 60 x 11 mm (2.8 x 2.4 x 0.4 in.)
Weight	25 g (0.88 oz)	40 g (1.41 oz)
Operating temperature	0 ... +40°C (+32 ...+104°F)	0 ... +40°C (+32 ...+104°F)
Storage temperature	-30 to +65 °C (-40 to +165 °F)	-30 to +65 °C (-40 to +165 °F)
Interface	RS232	TCP/IP (RJ45)
Compatible readers	9215689 TRANSIT Ultimate	9215689 TRANSIT Ultimate
Required firmware	P61, P81, P82, P84, P85	Any
Standards	CE, FCC, IC, ACMA, R-NZ	CE, FCC, IC, ACMA, R-NZ

Technical specifications	RS422/ RS485 Interface Board	OSDP Interface Board
Part number	9230793	9229078
Dimensions	70 x 60 x 11 mm (2.8 x 2.4 x 0.4 in.)	110 x 90 x 25 mm (4.3 x 3.5 x 0.4 in.)
Weight	25 g (0.88 oz)	25 g (0.88oz)
Operating temperature	0 ... +40°C (+32 ...+104°F)	0 ... +40°C (+32 ...+104°F)
Storage temperature	-30 to +66 °C (-40 to +165 °F)	-30 to +66 °C (-40 to +165 °F)
Interface	RS422/485	RS485
Compatible readers	9215689 TRANSIT Ultimate	9215689 TRANSIT Ultimate
Required firmware	Any	Any
Standards	CE, FCC, IC, ACMA, R-NZ	CE, FCC, IC, ACMA, R-NZ
Document version number	2.3	